



INSTALLATIONS FOR STORAGE, HANDLING & FABRICATION

**Helping customers get the best from
machinery, land and buildings since 1832.**

Grain Handling & Storage
Drying, Cleaning & Sorting
Consultancy & Design
Commercial Processing Plants

On-Farm Installations
Steel Fabrication
Repairs & Upgrades
Service, Maintenance & Breakdown

It's our people who make the difference



TH WHITE
PROJECTS

**OVER 40 YEARS
OF ACHIEVEMENT**



PROCESSING, STORAGE, HANDLING, FABRICATION

Experience the T H WHITE difference

T H WHITE is the UK's largest independent specialist in the design and construction of cereal processing and storage solutions for the commercial and farming sectors, working with the milling, malting, brewing, ports and processing industries.

Based in Devizes, Wiltshire, T H WHITE started trading in 1832, and has since expanded dramatically, always maintaining a strong focus on agriculture. Our involvement in grain processing began in the 1950s when new drying and storage systems were developed and the company soon amassed specialist knowledge around delivering complete projects.

By the late 1970s T H WHITE was increasingly applying its expertise to the huge growth in the sector, spurred on by the emergence of large crop processing agricultural co-operatives. Projects

were taken from conception to completion, through design, planning, contracting and commissioning.

The scale of the business resulted in T H WHITE Projects being incorporated in the final few days of December 1978. The new entity became fully operational in 1979, making 2019 our 40th anniversary year.

So just what is the T H WHITE difference? It all comes down to our people. We are technical engineers with a focus on customer service. Our personal touch means we listen to your needs, impart our experience to scope the best solution and then deliver it. Our experienced site personnel are supported by fully equipped workshops and once your installation is up and running we are on-hand to look after that equipment for its lifetime, providing servicing, upgrades and refurbishments as needed.



Commercial installations



Farm installations



Advanced processing centres



Storage and processing



Driers



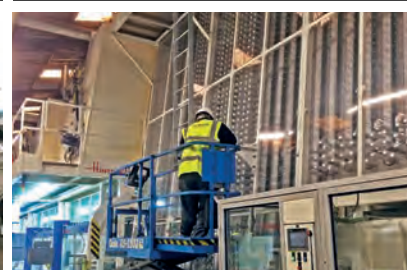
Steel fabrication



Grain floors



Port installations



Maintenance, repair & upgrades

COMMERCIAL & INDUSTRIAL

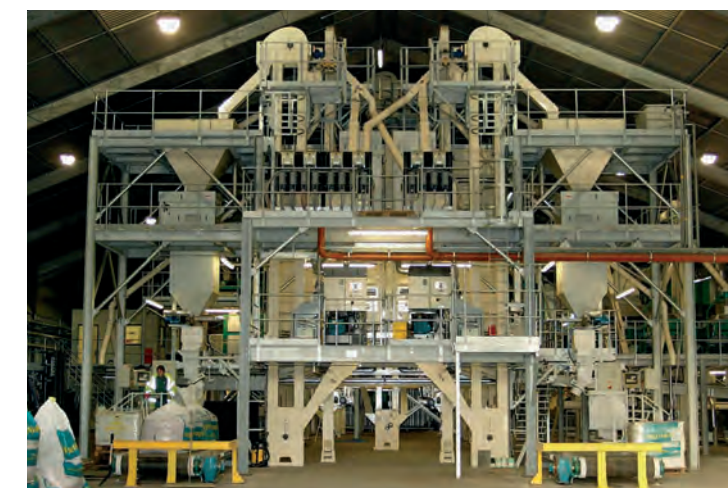
Grain processing and storage solutions for cooperatives, milling, malting, brewing and ports.

Our complete turnkey solutions are focused on boosting efficiency and profitability. We draw upon almost 200 years experience across the T H WHITE Group to deliver fast and functional cereal processing and storage installations.

Our organisation is led by experts from the industries we serve. So we know how to get the absolute best out of your grain-handling and processing solution. We will work tirelessly to ensure your needs are met. No bulk storage, grain processing or steel fabrication project is the same as another, and we will never treat it as such.

T H WHITE Projects was commissioned to design and construct the Honey Pot Lane Seed Plant in Lincolnshire (below) at the Openfield processing facility.

The result is one of the most modern plants in the UK with the capacity to process 20,000 tonnes of seed per annum giving significant economies of scale. The system solution, which included the latest seed treatment technology, is arranged to deliver a peak processing capacity of over 500 tonnes of seed per day, thus ensuring a fast turnaround of finished product – especially during difficult harvest seasons.



From concept, through planning, site acquisition, design, tender and construction, a great partnership is essential, and T H WHITE has ridden the rollercoaster with us on many occasions. I've enjoyed being associated with you for 38 of your 40 years and wish you continued success. Thank you THW!

Rob Sanderson, Openfield

www.thwhiteprojects.co.uk

T H WHITE
PROJECTS

OVER 40 YEARS
OF ACHIEVEMENT





Camgrain's relationship with T H WHITE has been one of trust and professionalism since the formation of Camgrain in 1983. For turnkey projects they are, and will continue to be, our partner of choice – as they have been for the last 35 years.
Philip Darke, Camgrain

T H WHITE Projects has enjoyed a working relationship with the farmer-owned co-operative Camgrain spanning more than 30 years.

One of the co-operative's four **Advanced Processing Centres** located in Kettering was designed and constructed by T H WHITE ready for the 2012 harvest and has since been augmented with the addition of high capacity driers and a fine wheat cleaning facility to meet the British Retail Consortium 'Grade A' standard. Today the plant is capable of processing 1.2 million tonnes of wheat per annum.



At Camgrain's Stratford APC, T H WHITE Projects acted as principal designer, mechanical and electrical contractor over an eight month modernisation programme, during which a new **20,000 tonne flat store building** has taken shape alongside the existing steel silo grain storage complex.

The new building, which has an approximate floor area of 30x100m, incorporates underfloor ventilation and temperature monitoring, and is fed by a new 200tph road intake conveying and elevating system. This features a belt conveyor and tripper carriage at high level in the apex of the flat storage building which distributes the cereal automatically to allocated areas.

As principal contractor, T H WHITE Projects completed a two-phase quayside development for Angus Cereals at the Port of Montrose in Scotland, undertaking the design and construction of the new grain terminal at the mouth of the River Esk.

Phase one delivered a bulk storage capacity of 26,000t with five bunkers, two 200tph intakes, three 720t holding silos and three high capacity grain driers. This was augmented in phase two with a further 14,000t of storage, including a 150t bulk loading silo, and there are provisions in the design for further expansion of 36,000t of storage with associated driers and loading silo.



FARMS & ESTATES

Small to large-scale agricultural, farm and estate installations remain at the heart of our business

Our experience with farmers, farmland and everything that comes with them is built on almost 200 years of expertise.

In fact, many of us are from farming and agricultural backgrounds, and some of us are still active farmers. We understand just how important it is to have allies in the farming industry to help when things go wrong – or to prevent them going wrong!



Using our specialist knowledge of the most efficient on-farm processes, combined with our in-house design and planning expertise, we have been able to help many customers to achieve economic solutions in projects of all sizes, saving time, stress and money.

For example, at the Forest of Bere Estate near Stockbridge, T H WHITE Projects designed and built a **2,000t grain store** (above) with on-floor drying equipment, together with a second steel-frame building to house a weighbridge, machinery, a workshop, store and biomass boiler room.

At Rushall Mill & Organics near Pewsey, T H WHITE Projects was awarded the contract to design and construct a new **grain storage, drying and processing facility** (below) within the confines of the venture's existing plant at Pewsey, Wiltshire. A combination of silos and bunkers with ventilated floor drying is complemented with specialist processing equipment for spelt and a grain colour sorter.



The latest of three grain processing and storage contracts undertaken by T H WHITE for Beeswax Dyson Farming Ltd. has been for a 10,000 tonne purpose-built grain storage facility with intake, cleaning, drying and conditioning of combinable crops at Mayfield Farm (above), on the Compton Estate near Newbury.

T H WHITE Projects acted as principal contractor with responsibility for the overall design and management of the civil, mechanical and electrical engineering elements throughout the 12 month programme. The plant is designed with a single 150tph trench intake system, conveying the grain via a rotary cleaner into a pair of continuous flow driers, or direct to store through an overhead belt conveyor and distribution cross chain conveyors, into one of the three dedicated crop storage bunkers. Each of these has a series of external fan units feeding a level-floor lateral ventilated system.



FABRICATIONS

If you can imagine it, we can build it!

Our in-house steel fabrications team supports each of our departments, while also offering a fully independent service.

We can fabricate everything you need for grain storage projects, milling, industrial processing, port and transport applications and a wide range of utilities. Whether the requirement is for bins, hoppers, ducting to structural steelwork, gantries, ladders, platforms and everything in between, we can design and create the fabrications you need, from the ground up.



We love a challenge and we are always looking out for an exciting new bespoke project to which we can apply our fabrication expertise.



What's more, as a T H WHITE Projects customer you can be sure that all structural steel work ordered from us will carry the CE mark. Steel fabrications, buildings and structures that we manufacture, comply with ISO 9001:2015 Quality Standard and we are also validated to supply structural steel to BS-EN 1090, the standard legal required for CE-marked structural steel work.

Our proactive approach in attaining these accreditations was not simply compliance with the law, but rather a confirmation that the processes and standards we already had in place were the right ones, which met or exceeded the standards the assessors were looking for. They are a mark of our commitment to quality and first class client service.



INSPECTION, MAINTENANCE, REPAIR & UPGRADES

We don't just design and install. We are on hand to look after your grain storage, cereal processing or steel fabrication project for its lifetime.

Our dedicated team of mechanical and electrical servicing experts, specialising in the field of grain storage, are on hand and on demand for regular health checks and services to ensure you're getting the absolute best out of your project.

SERVICE & PARTS

Keeping your business running when it matters is our top priority. When the pressure is really on – such as during harvest – equipment and systems are often being worked to their limit and a breakdown can be highly disruptive. We offer a range of maintenance plans to help avoid breakdown occurring in the first place, but if something does fail our trained engineers can be on site quickly to get you back in action.

We carry a vast stock of parts and can source items rapidly from all major manufacturers. Examples of equipment that T H WHITE Projects can maintain and service include chain, belt and screw conveyors, screw augers, bucket elevators, driers, cleaners, mixers, dust filters, mills, weighers and control systems.



UPGRADES & REPLACEMENT

If you are thinking of increasing your site throughput, storage and drying volumes, or adding to buildings, we have the skilled professionals within our team to address your requirements.

No matter how large or small your project may be, we can advise on consultancy and system design, refurbishment or improvements to get more from your existing plant, as well as supplying exactly the correct new machinery. Steelwork can be fabricated or modified to suit specific requirements and control panels, while mechanical and electrical systems can also be serviced and upgraded.



INSPECTION & REPAIR

It's not always easy to detect potential problems before they manifest themselves, but regular health checks as part of a planned maintenance package can go a long way towards preventing problems.

Service plans and maintenance contracts are available from T H WHITE Projects at competitive rates. As well as carrying out regular health checks we will produce detailed reports and provide free of charge estimates for any work or parts that may be required.

Unlike many companies where the primary aim is to sell goods and services, we prefer to work with our customers to achieve the best value solutions. After all, the continuing success of your business is what ensures the success of our business.



ADDITIONAL PRODUCTS TO ASSIST OUR CUSTOMERS

As part of our holistic approach to solving the challenges faced by customers, we also source and supply products that are a great fit with the industries we work with.

An excellent example is the Dust Suppression Hopper, available in England and Wales exclusively from T H WHITE. Many of our clients need to load, store and transport free flowing materials which can result in hazardous dust levels. Depending on the material being handled, dust may not just be unpleasant and unsightly – it can cause health issues, environmental hazards and even the risk of explosion.

Simple in design, yet highly effective, the patented Dust Suppression Hopper funnels material through a restricted orifice and cone, causing it to adopt a swirl. As the material exits the nozzle a combination of surface tension, compression and the induced vortex holds it together in a tight, highly controlled stream which contains any dust within the column in a highly effective manner.

It takes the form of an easily-installed loading spout, designed to be mounted immediately beneath an existing feed point. It's ideal for use where free-flowing products need to be packed, bagged, or loaded into ships, railway wagons, trucks, silos or storage bins.

Available in 10 sizes and a variety of materials, the Dust Suppression Hopper is already successfully handling cereals, sugar, salt, pet foods, sand, gravel, limes, minerals, pellets and chemical powders. Other dry goods can be trialled.



A WORD ON QUALITY & ACCREDITATIONS

T H WHITE Projects subscribes to the highest levels of quality control and has achieved a number of accreditations that provide you with peace of mind in choosing us to supply you with a product, a component, a system or a turnkey process and storage package.

Key among these accreditations is ISO9001:2015, the internationally recognised Quality Management System. This confirms that we provide products and services that meet customer and applicable statutory and regulatory requirements, at the same time



putting the customer first.

The CE Mark is equally important and is now a legal requirement for all structural steel work throughout Europe in accordance with BS-EN 1090. The same applies to machinery supplies, where CE Marking denotes that the equipment meets essential Health & Safety requirements.

All our external accreditations underwrite T H WHITE's compliance standards and provide assurance to you, the customer, that you are dealing with the best available.

T H WHITE Projects

Nursted Road Devizes
Wilts SN10 3EA

01380 723040

projects@thwhite.co.uk

www.thwhiteprojects.co.uk

T H WHITE PROJECTS

OVER 40 YEARS OF ACHIEVEMENT

www.thwhiteprojects.co.uk

