

MALTING, BREWING AND DISTILLING



CRISP MALT- GT RYBURGH ADDITIONAL BARLEY STORAGE

Centrally located in Gt Ryburgh near Fakenham, Norfolk is the head office and Malting Process plant for the Crisp Malting Group which in 2016 involved T H WHITE Projects in the design & construction of a barley storage & intake facility.



T H WHITE
PROJECTS



CRISP MALT- GT RYBURGH

Co operative business venture results in successful on site barley storage solution...



PROJECTS CAPABILITIES

To develop a technical and commercially acceptable system solution T H WHITE Projects have been able to utilise available resource from their vast depth of knowledge and experience indicated in the capability schedule .

- Land survey & study
- Conceptual phased approach
- Planning assistance / consultation
- Principal designer / contractor
- Design & build contract
- Detailed engineering solutions
- Procurement / fabrications
- Project management / documentation
- System automation & controls
- Mechanical & electrical installation
- Commissioning & handover
- After sales service & support

T H WHITE Installation Ltd

Nursted Road, Devizes,
Wiltshire SN10 3EA.
T 01380 723040
F 01380 725707
E projects@thwhite.co.uk
www.thwhite.co.uk

MALTSTER TAKING STOCK

Two leading UK organisations in the fields of quality malt production and cereal storage respectively have combined to form a joint venture . Crisp Malting Group and Fengrain Ltd have joined forces to successfully build 10,000 tonnes of additional malting barley storage at the Gt Ryburgh Malting Plant in Norfolk under the overall design , construct and management of T H WHITE Projects who completed , commissioned and handed over the project in 2016.

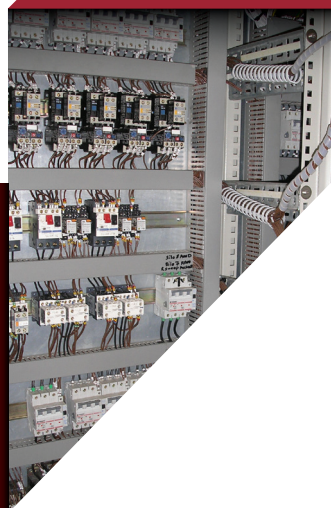
INSTALLED STORAGE AND HANDLING EQUIPMENT

10,000t Silo Storage

- Malting barley
- 4 x 2500t silos
- Single row format
- 17m diameter
- Flat bottom silos
- High level catwalks
- Access/inspection areas
- Silo aeration system
- Temperature monitoring
- Barley silo level probes
- Quality material control
- Sweep/auger discharge
- Discharge rate 30tph
- Separate intake system
- Bulk out loading 60tph
- Integrated automation

Civil Engineering

- Silo base construction
- Made up ground location
- Piled base requirement
- 321 piles / 24m depth



Getting the best from machinery, land and buildings since 1832.

**T H WHITE
PROJECTS**