

CO-OPERATIVE AND CENTRAL STORAGE



ABERDEEN GRAIN GRAIN SILO COMPLEX

In the North of Scotland Aberdeen Grain Limited which was originally built in 1984 has seen progressive growth over the years with a significant expansion in 2009 resulting in an operating facility of 65,000 tonnes designed and constructed by T H WHITE Projects.



T H WHITE
PROJECTS



ABERDEEN GRAIN

Phased design and build project solution proves beneficial as storage capacity continues to grow...



PROJECTS CAPABILITIES

To develop a technical and commercially acceptable system solution T H WHITE Projects have been able to utilise available resource from their vast depth of knowledge and experience indicated in the capability schedule.

- Land survey & study
- Conceptual phased approach
- Planning assistance / consultation
- Principal designer / contractor
- Design & build contract
- Detailed engineering solutions
- Procurement / fabrications
- Project management / documentation
- System automation & controls
- Mechanical & electrical installation
- Commissioning & handover
- After sales service & support

T H WHITE Installation Ltd

Nursted Road, Devizes,
Wiltshire SN10 3EA.
T 01380 723040
F 01380 725707
E projects@thwhite.co.uk
www.thwhite.co.uk

GROWTH PLAN SUITS DESIGN

With the involvement of T H WHITE Projects operating in Scotland, Aberdeen Grain has embarked on a significant design and construction programme of phased growth by expanding its original capacity of 20,000 tonnes in 1984 up to an impressive 65,000 tonnes which leaves land available for development when the opportunity for further additional storage and processing of combinable crops is required to meet the ever increasing market demands.

SITE PROCESSING AND STORAGE FACILITIES

Storage Timeline

- 1984** – 20,000 tonnes flat storage/silos
- 1985** – 10,000 tonnes flat storage
- 2006** – 6,000 tonnes flat storage
- 2009** – 14,000 tonnes flat storage
- 2009** – 1,200 tonnes 3 x wet holding silos
- 2011** – 14,000 tonnes flat storage/silo

Continuous Flow Driers

- 1 x 70tph horizontal
- 3 x 75tph vertical
- 1 x 100tph vertical

Pre Cleaning/Aspiration

- rotary drum/grader
- aspiration
- 60tph malting barley
- 200tph feed wheat

Handling/Distribution

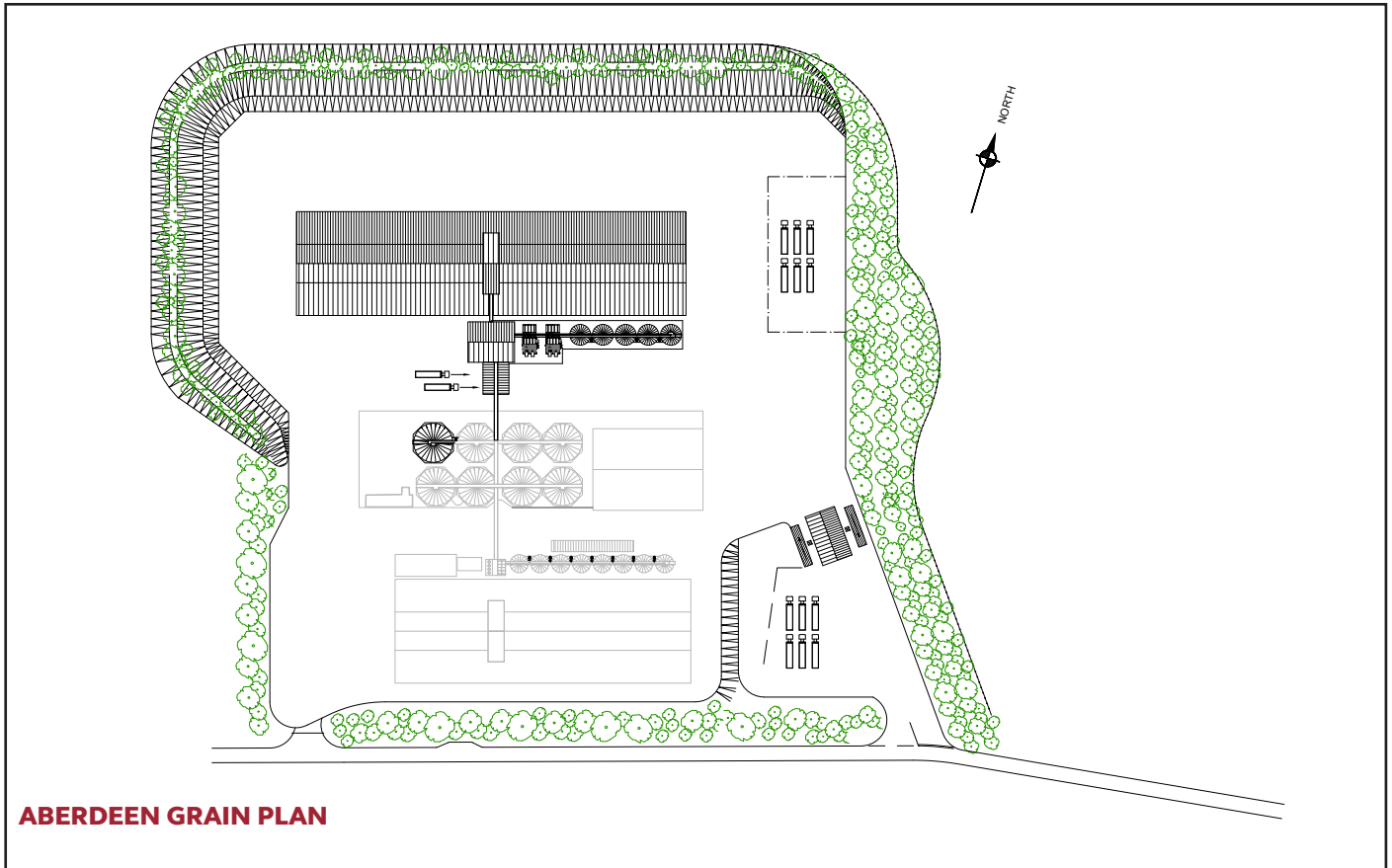
- 2 x 250tph intake
- rapid tailgate tips



Getting the best from machinery, land and buildings since 1832.

**T H WHITE
PROJECTS**

ABERDEEN GRAIN



**Hands on today;
eyes on tomorrow.**

T H WHITE
PROJECTS